

Veterinary Assisting

Veterinary Terminology Notes

A. Match scientific names of animals with their appropriate species

Scientific Names

Common Name	Latin Name	Species Name
Dog		
Cat		
Horse		
Cattle		
Sheep		
Goat		
Pig		
Bird		
Mouse		
Rat		

B. Define medical terms related to each body system

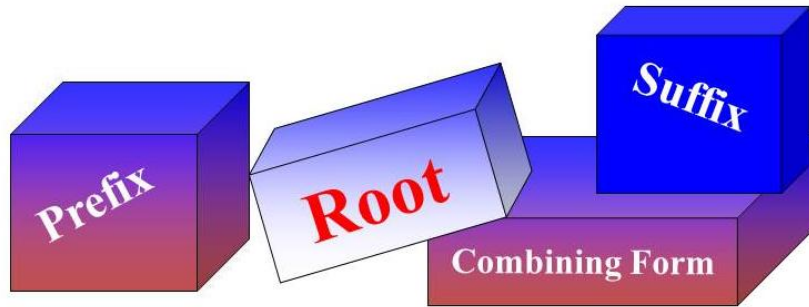
Body Systems

- Your body is made up of many systems, each having their own vital parts that work together. This list represents your bodily systems and the specific parts that comprise them:
 - Skeletal:
 - Respiratory:
 - Muscular:
 - Gastrointestinal:
 - Integumentary:
 - Endocrine:
 - Sensory:
 - Nervous:
 - Cardiovascular:
 - Urinary:
 - Lymphatic:
 - Reproductive:

C. Identify prefixes, suffixes, and root words in order to define medical terms;

Medical Terms

- Medical terms are composed of word part combinations consisting of:
 -
 -
 -
 -



Prefix:

- Consists of one or more syllables
- Placed at the beginning of word
- Can never stand alone

a-	No, not, without, away from
Brady-	Slow
Dys-	Bad, difficult, painful
Epi-	Upper
Eryth-	Red
Hemi-	Half
Hemo-	Blood
Hyper-	Above, increased, or more than normal
Hypo-	Below, under, or decreased
Infra-	Below or beneath

Inter-	Between
Intra-	Within
Meta-	Beyond
Poly-	Many
Sub-	Below, under, or decreased
Super-	Above, increased, or more than normal
Supra-	Above, increased, or more than normal
Tachy-	Fast
Trans-	Across
Ultra-	Above, increased, or more than normal

Practice:

1. _____ biotic (against life)
2. _____ thermia (high temperature)
3. _____ horn (remove the horn)

Root=

-
-

Abdomin/o	Abdomen
Aden/o	Gland
Audi/o	Hearing
Bio	Life
Brachi/o	Arm
Bronch/i/o	Bronchus
Carcin/o	Cancer
Cardi/o	Heart
Cephal/o	Head
Col/o	Colon
Cyt/o	Cell
Dent/i/o	Teeth
Derm/a/o, dermat/o	Skin
Encephal/o	Brain

Gastr/o	Stomach
Gynec/o	Female
Hemat/o	Blood
Hist/o, Histi/o	Tissue
Intestin/o	Intestine
Lapar/o	Abdomen, loin, flank
Lymph/o	Lymph vessels
Mamm/a, Mamm/o	Mammary Gland
Nas/o	Nose
Ophthalm/o	Eye
Ot/o	Ear
Steth/o	Chest
Thorac/o	Thorax
Trache/o	Trachea

Suffix=

-
-
-

-algia	Pain
-cyte	Cell
-ectomy	Surgical removal
-graphy	Recording of
-iasis	Infestation or infection
-ism	State or condition
-itis	Inflammation
-lysis	Destruction of
-megaly	Abnormally large
-ology/ologist	Specialist/study of
-oma	Tumor
-osis	Abnormal condition, disease
-oxia	Oxygen

-pathy	Disease
-penia	Deficiency of
-phagia	Eating, swallowing
-plegia	Paralysis, stroke
-pnea	Breathing
-sclerosis	Abnormal hardening
-scope	Instrument for examining
-sepsis	infection
-spasm	Involuntary contraction
-stasis	Control, constant level
-stenosis	Narrowing
-tomy	Cutting, incision
-toxin	Poison

Combining Form= Many medical words need a letter to connect the prefix to the root or the root to the suffix

- Vowel commonly used: “o”
- If the suffix starts with a consonant, connect the rootword and the suffix with the vowel “o”.
 - Root Word + CV Suffix New word
 Cardi + -o- -logy
- If the suffix starts with a vowel (a,e,i,o,u) DO NOT USE the vowel “o”. Just attach the suffix to the root word.
 - Root Word + Suffix New word
 Hepat/o -osis
- If the suffix begins with the same vowel as the root word, DO NOT repeat the vowel.
 - Root Word + Suffix New word
 Cardi -itis

Practice:

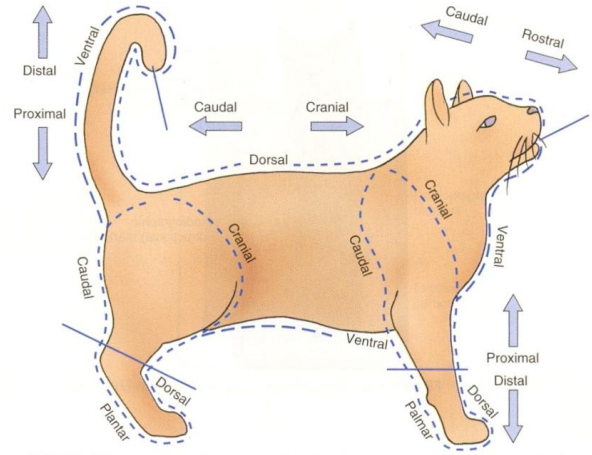
Medical Term	Definition
1-Erythrocyte	
2-Appendectomy	
3-Cardiomegaly	
4-Arthritis	
5-Biology	
6-Carcinoma	
7-Stethoscope	
8-Dermatitis	
9-Hemolysis	
10-Hemiplegia	

D. Decipher directional terminology

Directional Terminology

Caudal:

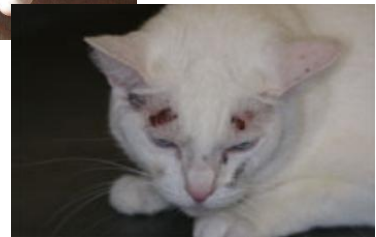
Cranial:



Deep:

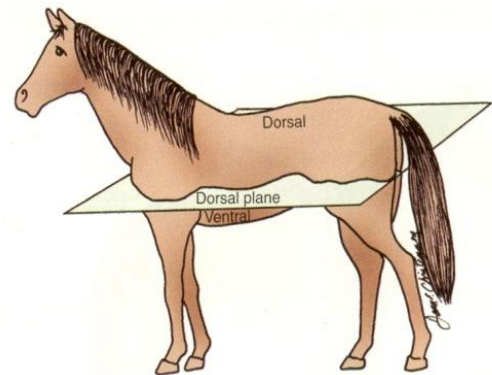


Superficial:



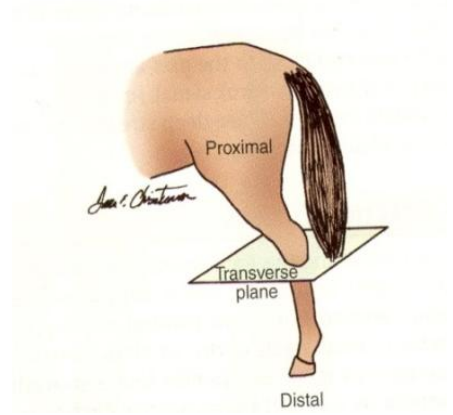
Dorsal:

Ventral:



Distal:

Proximal:



Anterior:

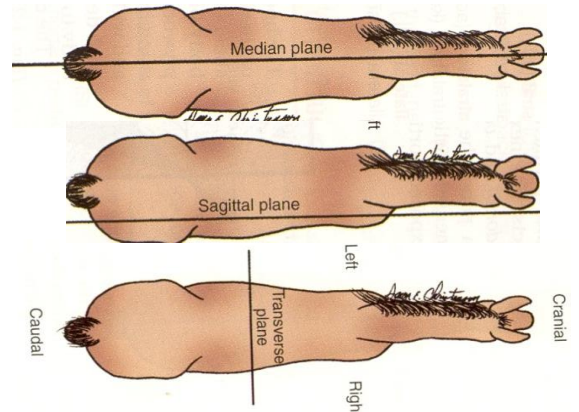
Posterior:



Median:

Sagittal:

Transverse



Lateral:

Medial:

E. Define medical abbreviations

List as many text message abbreviations you can think of:

Why are abbreviations used in the medical field?

ABBREVIATION	MEANING
ad lib.	
sid	
bid	
tid	
qid	
qh	
qd	
w/o	
Stat	
N	
DSH	
DLH	
Dx	
Hx	
Rx	
Sx	
FeLV	
FIA	
FIP	
ECG	
ICU	
cc	

ml	
wt	
HR	
PCV	
sg	
TPR	
UA,U/A	
IM	
IP	
IV	
Sub-Q	
rbc	
wbc	
DVM	
CNS	
GI	
DOA	
DOB	
	Female
	Male